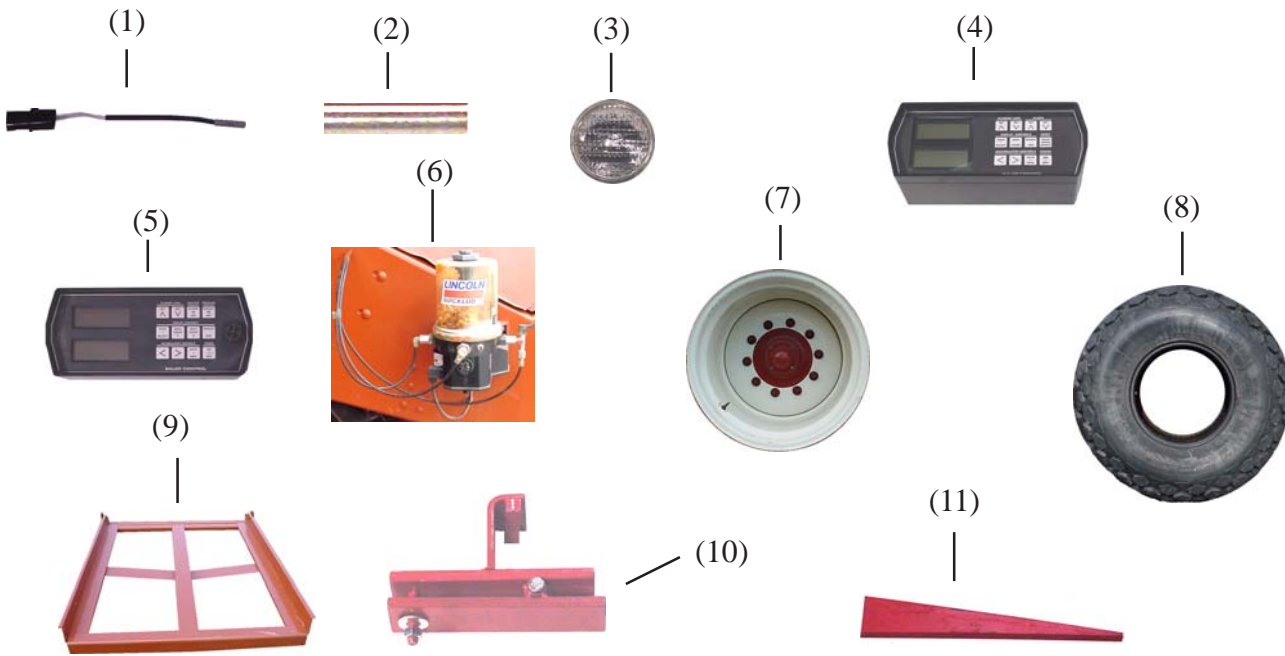


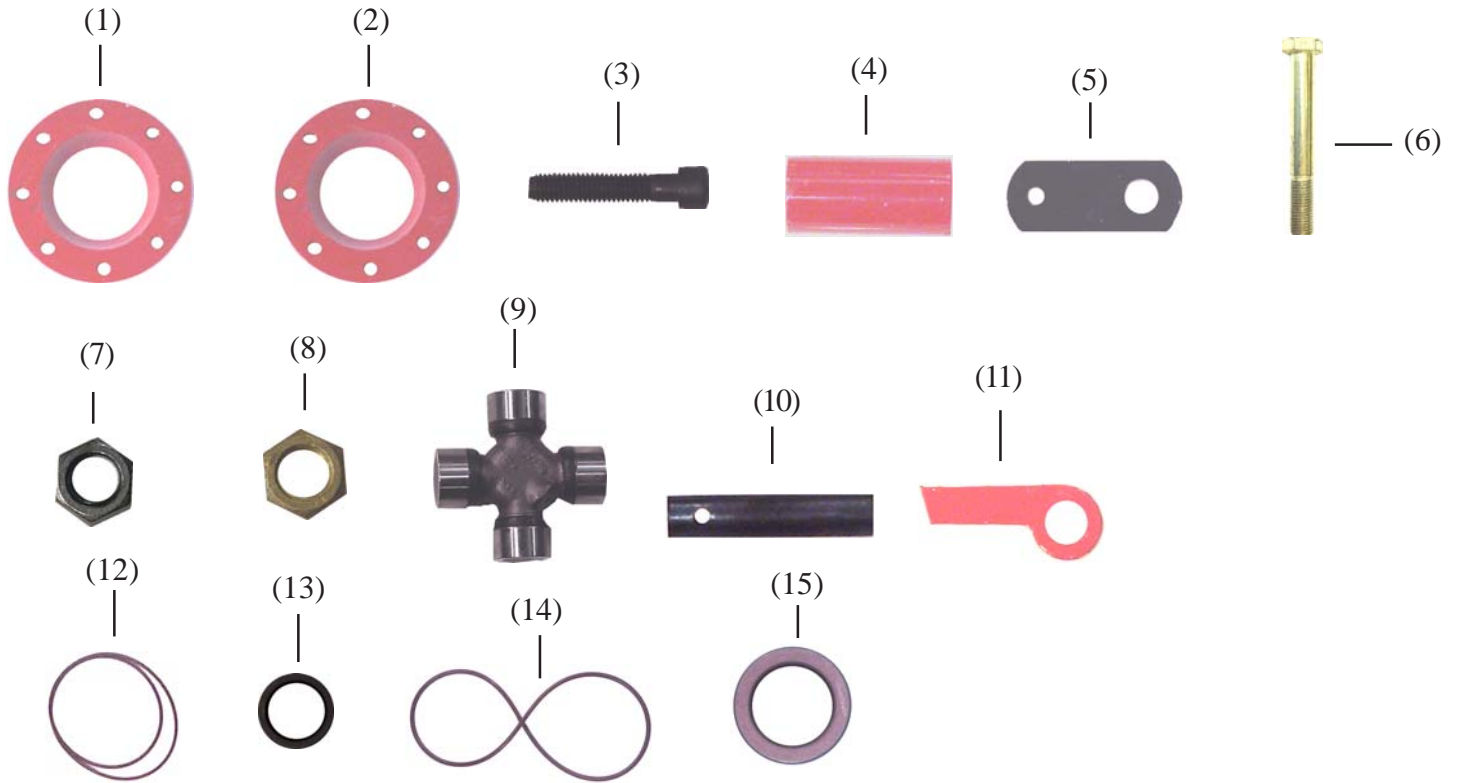
4900/4910 ELECTRICAL & SPECIALTY ITEMS



<u>Item No.</u>	<u>Maize (Hesston) Part No.</u>	<u>Qty Req</u>	<u>Machine Used On</u>	<u>Description</u>
1	M700113863 (700113863)	3	4900/4910	<u>Switch assy</u> , needle return, twine slackers
2	M700706340 (700706340)	3	4900/4910	<u>Magnet</u>
3	M71302289 (71302289)	A/R	4900/4910	<u>Replacement bulb</u>
4	*M700710612R	1	4900	<u>Control box</u> , rebuilt, SN 4901510 and below
5	*M700712845R	1	4900/4910	<u>Control box</u> , rebuilt, SN 4901511 and later
6	M3001879	1	4900/4910	<u>Lube kit</u> , stuffer crank fingers (complete)
7	M700706122 (700706122)	1	4900/4910	<u>Wheel</u> , 28L x 26
8	M700706114 (700706114)	1	4900/4910	<u>Tire</u> , baler 28L x 26
9	M6521892	1	4900/4910	<u>Bale chute</u> , complete
10	M3002083	1	4900/4910	<u>Special tool</u> , to raise plunger to change roller bearing
11	M3003198	1	4900/4910	<u>Special tool</u> , to remove gib (tapered) keys

*A core charge will be invoiced at the time of shipment. This will be credited back when the core is received at Maize Corporation at Kearney, Ne or Maize, KS. This invoice will carry past due charges if not returned promptly.

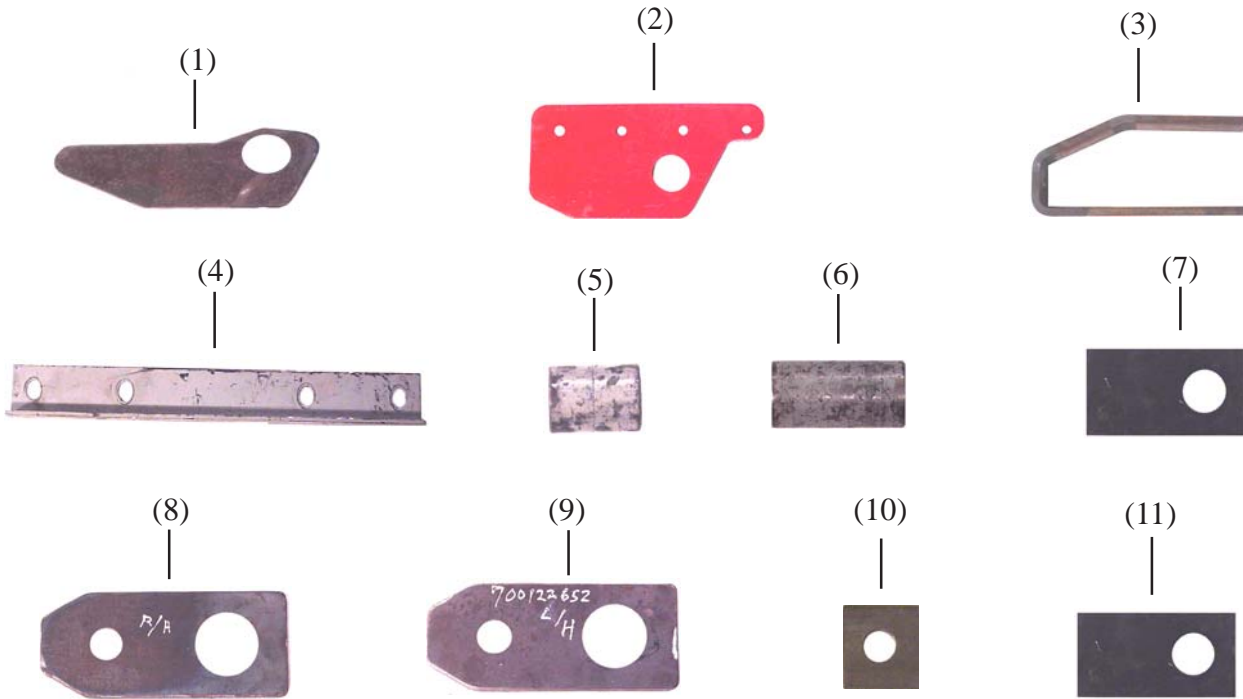
4900/4910 HITCH AND MAIN DRIVE LINE AND GEARBOX SEALS



<u>Item No.</u>	<u>Maize (Hesston) Part No.</u>	<u>Qty Req</u>	<u>Machine Used On</u>	<u>Description</u>
1	M1663158 (1663158)	1	4900/4910	<u>Ring</u> , lower, hitch plate, threaded
2	M1663157 (1663157)	1	4900/4910	<u>Ring</u> , upper, hitch plate, counter sunk for bolt head
3	M70912269 (70912269)	8	4900/4910	<u>3/8-16 x 2 Socket head bolt</u> , grade 8
4	M1663162 (1663162)	1	4900/4910	<u>Spacer</u> , hitch plates
5	M1663161 (1663161)	2	4900/4910	<u>Hitch plates</u>
6	M700124041 (700124041)	1	4900/4910	<u>1-1/4 - 7 x 9 Bolt</u>
7	M70933402 (30020AF)	1	4900/4910	<u>1-1/4 - 7 H Nut</u>
8	M704585 (704585)	1	4900/4910	<u>1-1/4 - 7 H Jam Nut</u>
9	M7815053 (7815053)	3	4900/4910	<u>Cross and bearing kit</u>
10	M700113037 (700113037)	2	4900/4910	<u>Pin for overrunning clutch pawl</u>

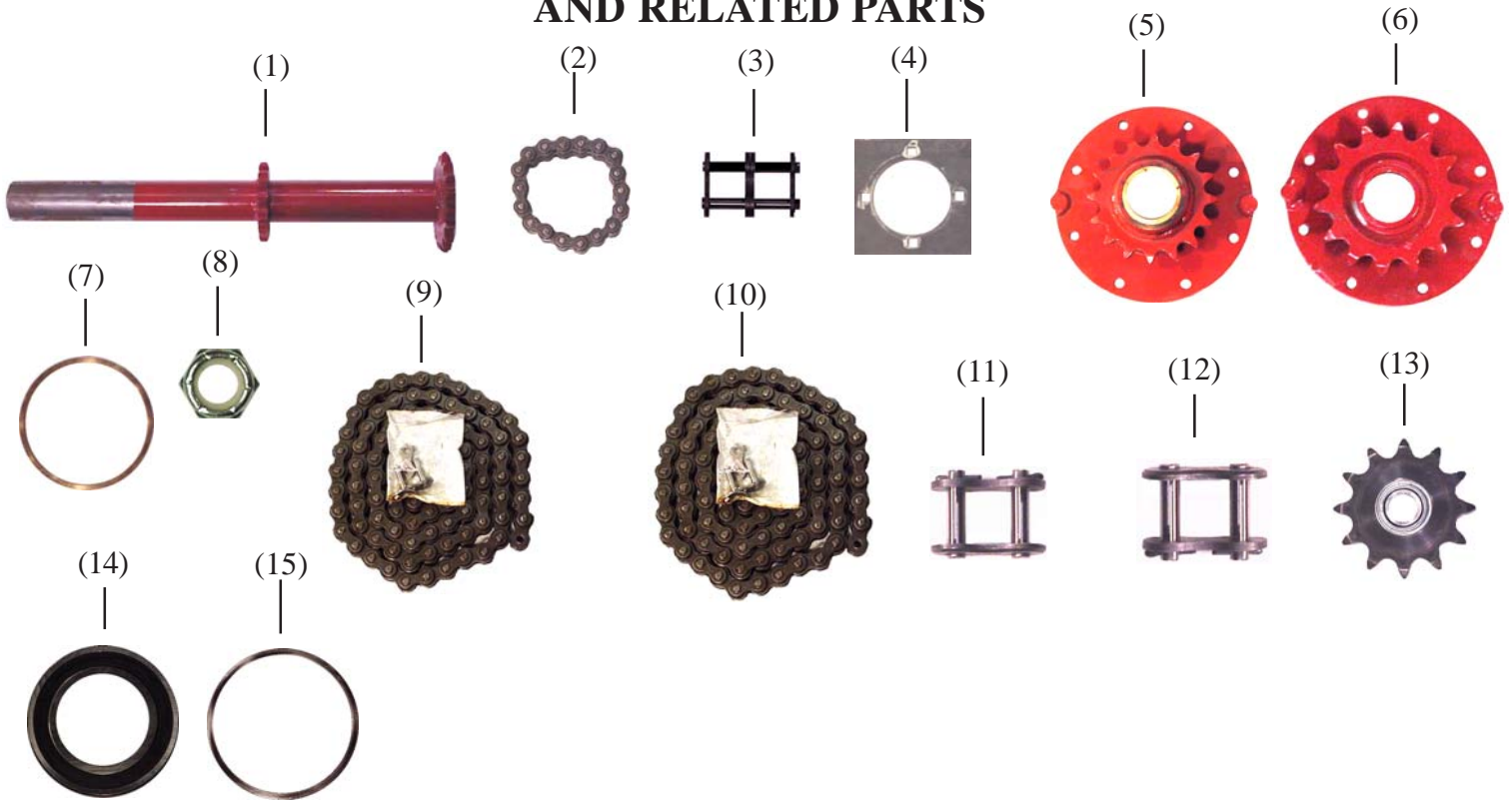
<u>Item No.</u>	Maize (Hesston) <u>Part No.</u>	<u>Qty Req</u>	<u>Machine Used On</u>	<u>Description</u>
11	M700113036 (700113036)	2	4900/4910	<u>Pawl for overrunning clutch</u>
12	M700706050 (700706050)	1	4900/4910	<u>O-ring, gearbox shaft</u>
13	M700708000 (700708000)	1	4900/4910	<u>Seal, gearbox shaft</u>
14	M700707999 (700707999)	1	4900/4910	<u>O-ring, gearbox shaft</u>
15	M700706045 (700706045)	1	4900/4910	<u>Seal, gearbox shaft</u>

4900/4910 GEARBOX BRACKETS, PANS & DOUBLERS SECONDARY DRIVE



<u>Item No.</u>	<u>Maize (Hesston) Part No.</u>	<u>Qty Req</u>	<u>Machine Used On</u>	<u>Description</u>
1	M700112957	2	4900/4910	<u>Spacer plate</u> , inside, lower pin mount
2	M700122641P	2	4900/4910	<u>Spacer plate</u> , outside, lower pin mount
3	M700113430 (700113430)	4	4900/4910	<u>Mounting bracket stop</u> , lower, main frame
4	M700122656	1	4900/4910	<u>Spacer template</u> , lower mounting bracket
5	M700122657	2	4900/4910	<u>Top spacer</u> , for between top mount frame mtg brackets
6	M700122658	2	4900/4910	<u>Top spacer</u> , for hole alignment, top main frame mtg brackets
7	M700122654 (700122654)	4	4900/4910	<u>Top spacer</u> , between inside main frame mtg brackets
8	M700122651	1	4900/4910	<u>Doubler plate</u> , RH
9	M700122652	1	4900/4910	<u>Doubler plate</u> , LH
10	M700113042 (700113042)	4	4900/4910	<u>Spacer</u> , lower mount
11	M700710264 (700710264)	1	4900/4910	<u>Top spacer</u>

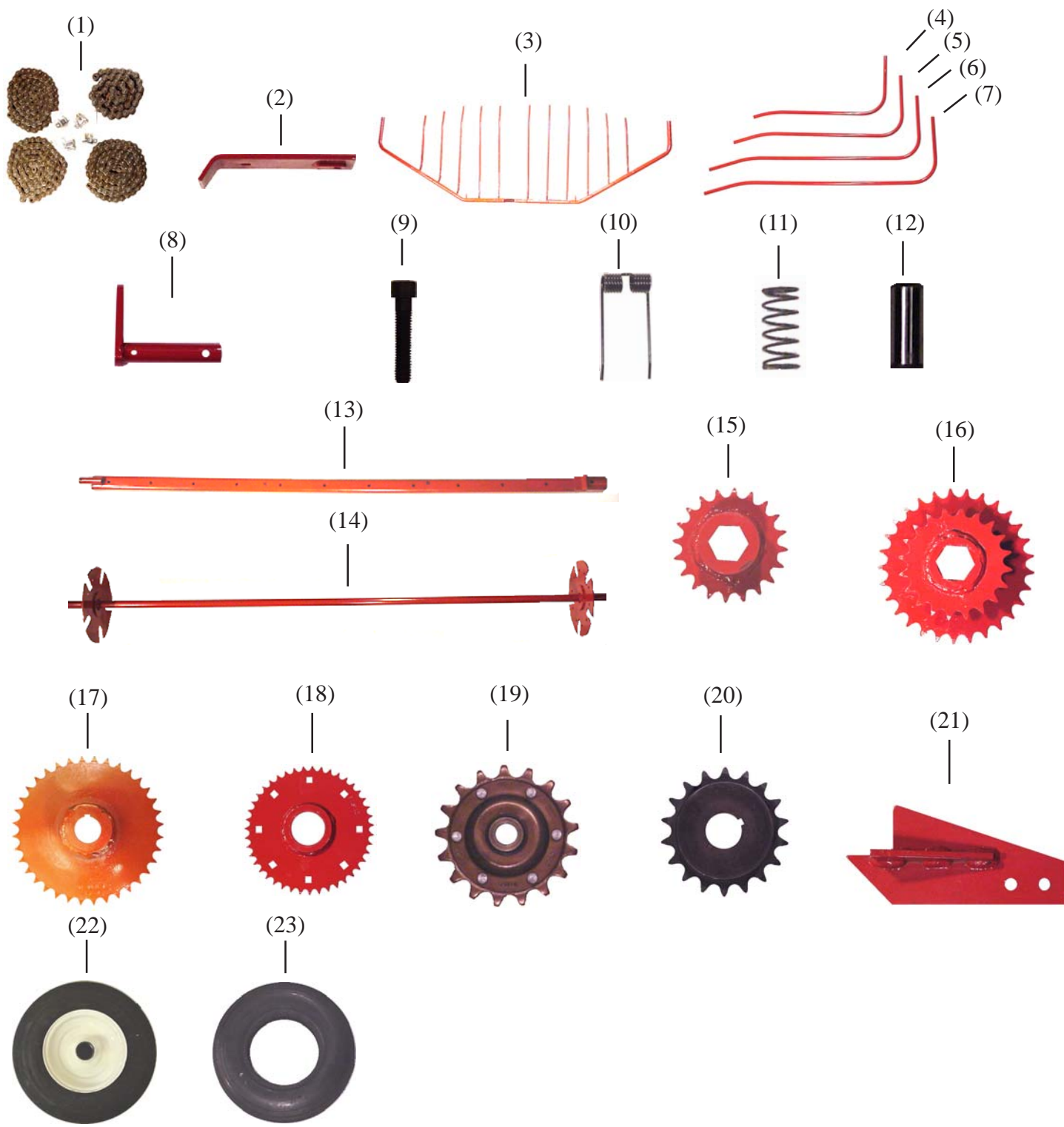
4900/4910 SECONDARY DRIVE BEARINGS, STUFFER DRIVE AND RELATED PARTS



<u>Item No.</u>	<u>Maize (Hesston) Part No.</u>	<u>Qty Req</u>	<u>Machine Used On</u>	<u>Description</u>
1	M700112919 (700112919)	1	4900/4910	<u>Stuffer drive shaft, w/a</u>
2	M851972B (851972)	1	4900/4910	<u>Chain coupling, 60-18 w/connecting link</u>
3	M70932870 (70932870)	1	4900/4910	<u>60 Double connecting link</u>
4	M714360B	A/R	4900/4910	<u>Doubler plate, RH stuffer drive and packer crank bearing</u>
5	M700112899 (700112899)	1	4900/Early 4910	<u>Sprocket, clutch plate w/a 80-16, 4910 101 thru HK91220</u>
6	M700138871 (700138871)	1	4910	<u>Sprocket, clutch plate w/a 100-14, 4910 HK91221 and later</u>
7	M6565030 (6565030)	1	4900/4910	<u>Bushing, for M700112899 and M700138871</u>
8	M70919439 (70919439)	8	4900/4910	<u>Nylock nut, stuffer clutch</u>
9	M70922897 (7087935)	1	4900/Early 4910	<u>Chain, stuffer drive, 80h x 95 links w/connecting link</u>
10	M79022905 (W980268US)	1	Late 4910	<u>Chain, stuffer drive, 100x 77 links w/connecting link</u>

Item No.	Maize (Hesston) Part No.	Qty Req	Machine Used On	Description
11	M085712 (7088008)	1	4900/Early 4910	<u>Connector link, 80 R/C</u>
12	M086405 (86405)	1	Late 4910	<u>Connector link, 100 R/C</u>
13	M747931 (Y747931)	1	4900/4910	<u>Idler sprocket, 80 pitch</u>
14	M7713894 (7713894)	2	4900/4910	<u>Bearing, cylindrical</u>
15	M700112933 (700112933)	1	4900/4910	<u>Brass bushing</u>

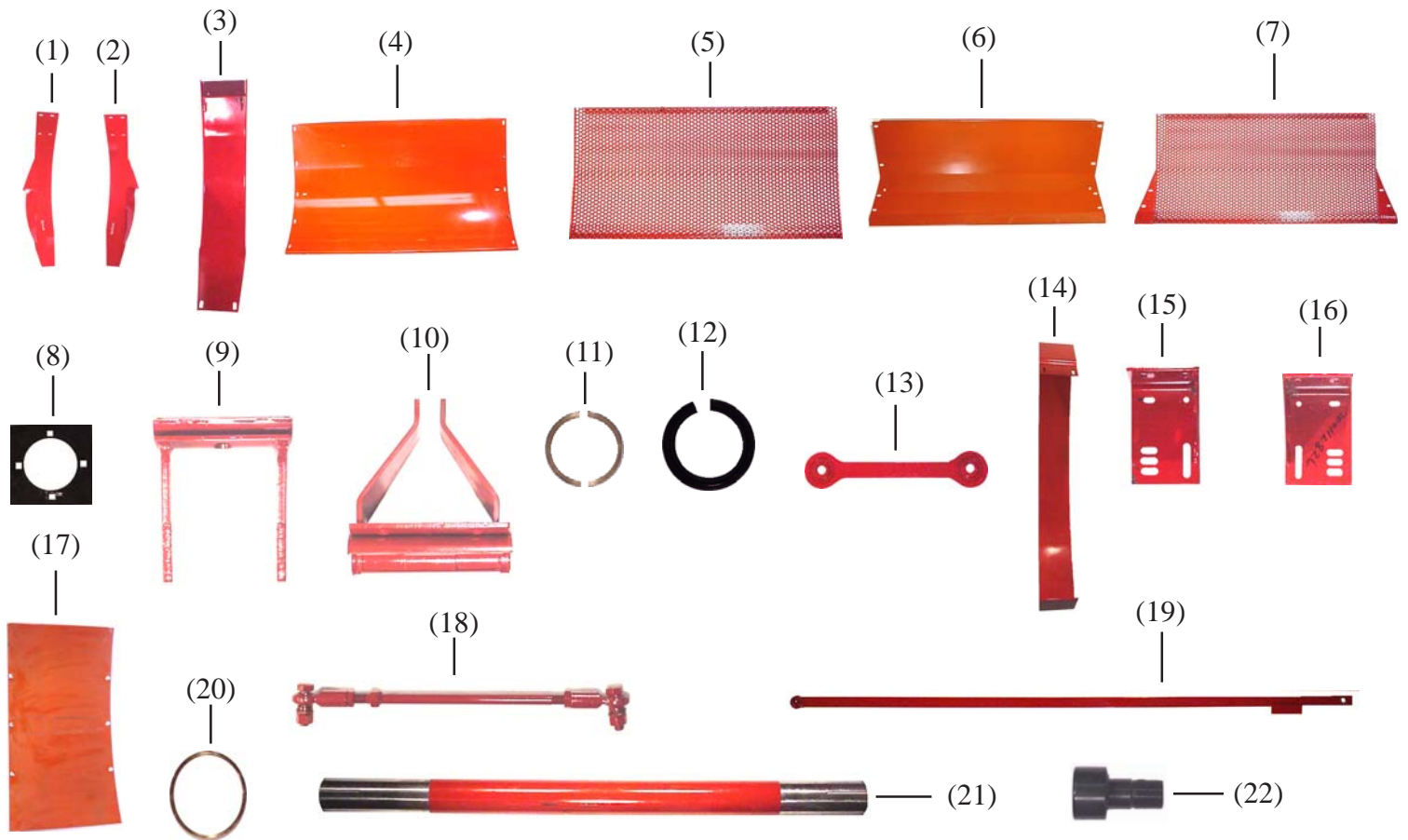
4900/4910 PICKUP ATTACHMENT AND RELATED PARTS



Item No.	Maize (Hesston) Part No.	Qty Req	Machine Used On	Description
1	M3006709	1	4900/4910	<u>Chain kit</u> , all chains for PU attachment with connectors
2	M700113244H	1	4900/4910	<u>Bracket</u> , PU wrapper attaching-weld on
3	M700113617 (700113617)	1	4900/4910	<u>Wind guard</u> , made in two pieces for easy shipment

<u>Item No.</u>	<u>Maize (Hesston) Part No.</u>	<u>Qty Req</u>	<u>Machine Used On</u>	<u>Description</u>
4	M700113617F (700113619)	5	4900/4910	<u>Hold down bar</u> , center
5	M700113617E (700113620)	2	4900/4910	<u>Hold down bar</u> , next to center
6	M700113617D (700113622)	2	4900/4910	<u>Hold down bar</u> , second from outside
7	M700113617C (700113623)	2	4900/4910	<u>Hold down bar</u> , outside
8	M700113239 (700113239)	5	4900/4910	<u>Crank arm</u>
9	M70912269 (70912269)	5	4900/4910	<u>Socket head</u> , special 3/8 x 2, grade 8
10	M700706128 (700706128)	60	4900/4910	<u>Double tine</u> , heavy duty
11	M058511 (58511)	4	4900/4910	<u>Spring</u> , clutch, reel drive
12	M063800 (63800)	2	4900/4910	<u>Dowel pin</u> , 1/2 x 1-1/4, clutch, reel drive
13	M700113235 (700113235)	5	4900/4910	<u>Tine channel</u>
14	M700113229 (700113229)	1	4900/4910	<u>Reel w/a</u>
15	M700113643 (700113643)	1	4900/4910	<u>Sprocket</u> , 1-1/4 hex, auger drive
16	M700113636 (700113636)	1	4900/4910	<u>Double sprocket</u> , w/a 20/29 tooth
17	M6141311 (6141311)	1	4900/4910	<u>Sprocket</u> , reel drive, 50B 36
18	M700113254 (700113254)	1	4900/4910	<u>Sprocket</u> , clutch, 50A 43
19	M047142 (47142)	1	4900/4910	<u>Idler sprocket</u>
20	M7047541 (7047541)	1	4900/4910	<u>Sprocket</u> , PU drive 60B18
21	M700113291A	1	4900/4910	<u>Support w/a</u>
22	M700706130 (700706130)	2	4900/4910	<u>Wheel & tire assembly</u>
23	M7027485	2	4900/4910	<u>Tire with saw tread</u>

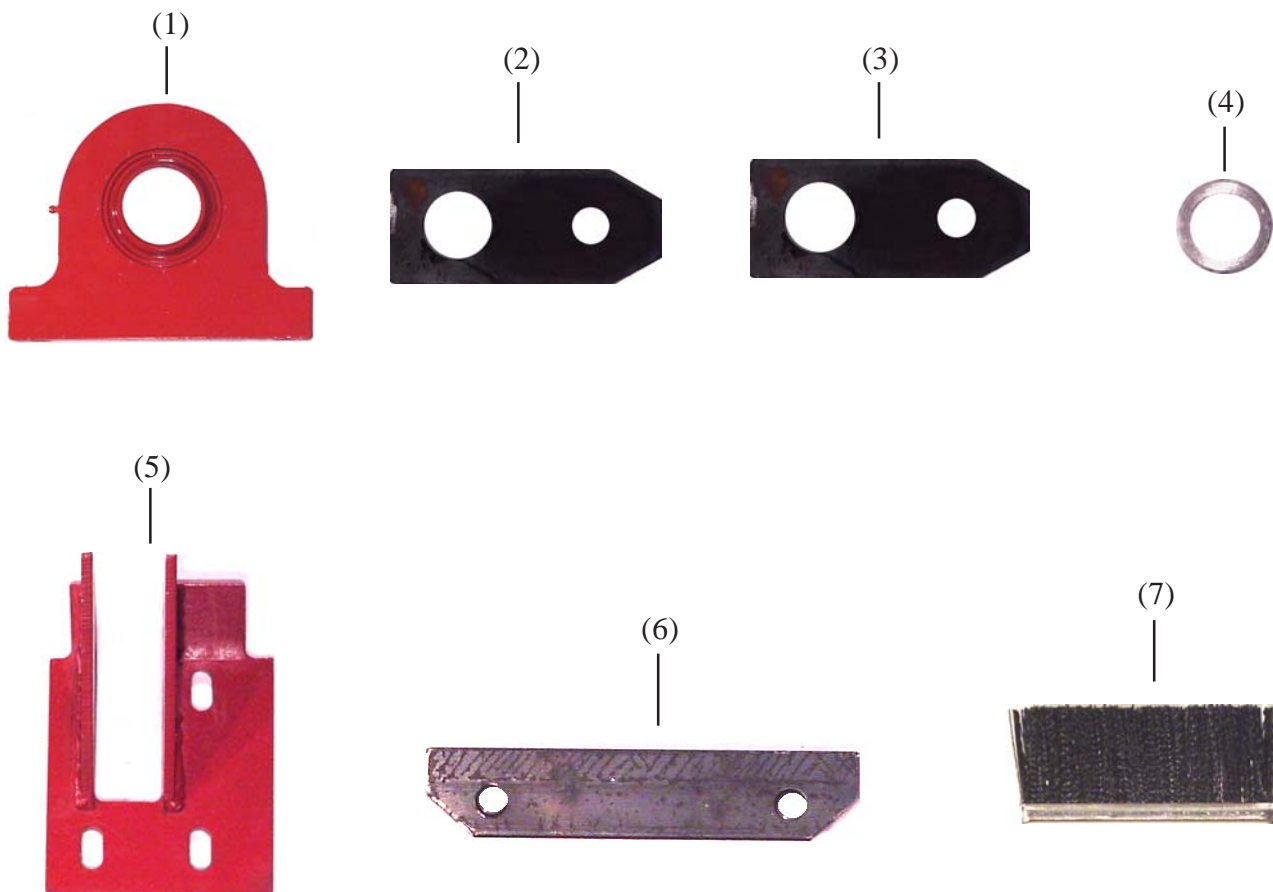
4900/4910 STUFFER AREA RELATED PARTS



Item No.	Maize (Hesston) Part No.	Qty Req	Machine Used On	Description
1	M700113532B	A/R	4900/4910	<u>RH outside stuffer band</u> , welded to frame, front packer
2	M700113532C	A/R	4900/4910	<u>LH outside stuffer band</u> , welded to frame, front packer
3	M700112800 (700112800)	5	4900/4910	<u>Wrapper w/a</u> , packer crank
4	M700112812	1	4900	<u>Pan</u> , under packer fingers
5	M3001986	1	4900	<u>Perforated pan</u> , under packer fingers, to let dirt out
6	M700134962 (700134962)	1	4910	<u>Pan</u> , under packer fingers
7	M3004337	1	4910	<u>Perforated pan</u> , under packer fingers to let dirt out
8	M714360B	A/R	4900/4910	<u>Doubler</u> , outside packer crank bearings
9	M700112787 (700112787)	3	4900/4910	<u>Finger w/a</u> , packer crank
10	M700112817 (700112817)	3	4900/4910	<u>Arm w/a</u> , packer crank

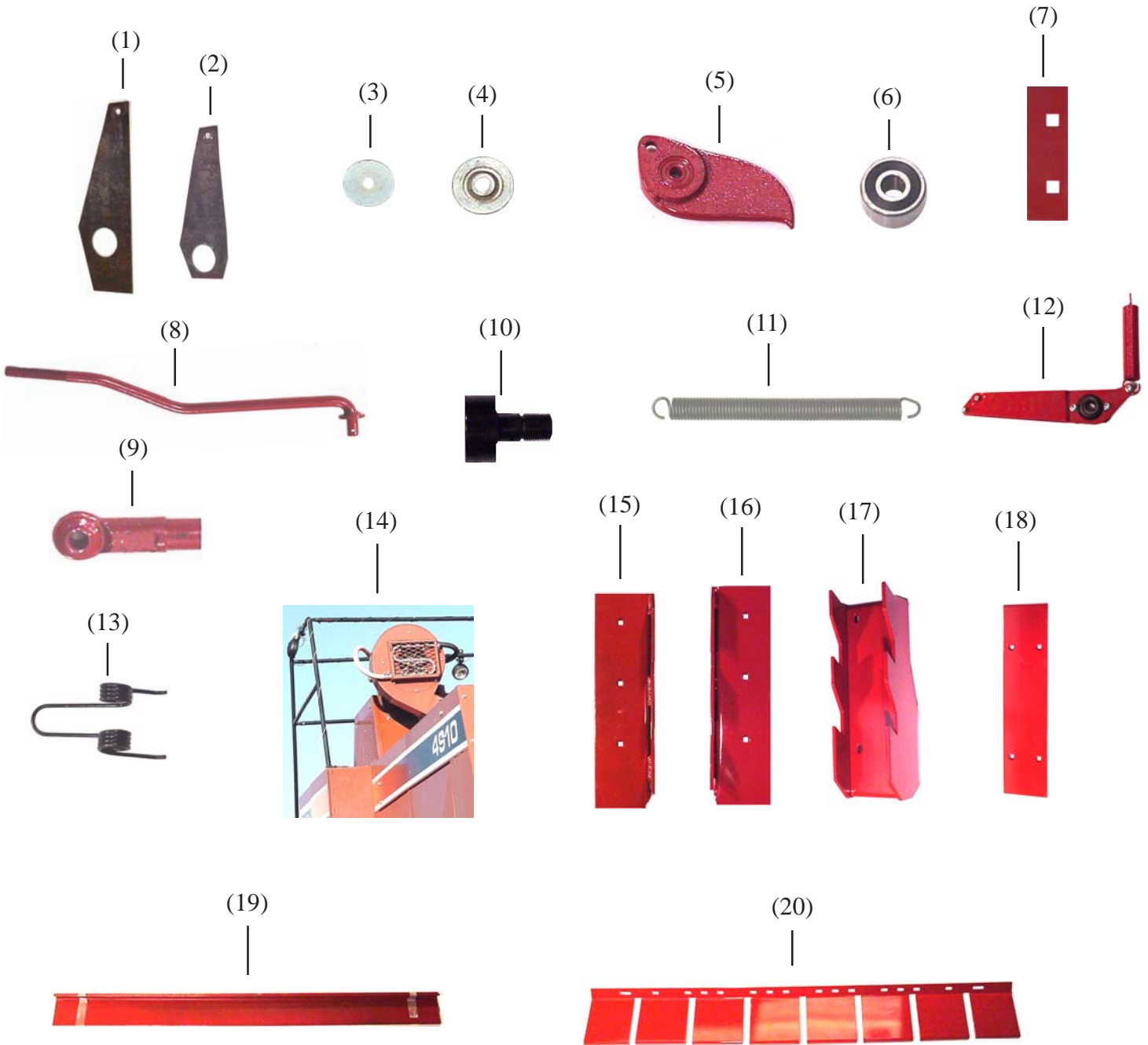
<u>Item No.</u>	<u>Maize (Hesston) Part No.</u>	<u>Qty Req</u>	<u>Machine Used On</u>	<u>Description</u>
11	M700706131 (700706131)	6	4900/4910	<u>Brass bearing set</u>
12	M700706096 (700706096)	6	4900/4910	<u>Seal</u>
13	M700124036	3	4900/4910	<u>Dogbone link</u> , includes two bearings and four bushings
14	M700112811 (700112811)	1	4900/4910	<u>Wrapper</u> , stuffer chute
15	M700112825	1	4900/4910	<u>Bracket</u> , wrapper LH, height adjustment
16	M700112826	1	4900/4910	<u>Bracket</u> , wrapper RH, height adjustment
17	M700112814 (700112814)	1	4900/4910	<u>Liner</u> , stuffer chute, two piece for shipping
18	M3005790 (700112882)	1	4900/4910	<u>Adjustable rod</u> , stuffer trip (uniball ends)
19	M3005782 (700112872)	1	4900/4910	<u>Trip rod assembly</u> , (uniball end)
20	M700112892 (700112892)	4	4900/4910	<u>Brass bearing</u>
21	M700112881 (700112881)	1	4900/4910	<u>Stuffer shaft</u>
22	M7713837 (7713837)	2	4900/4910	<u>Cam bearing</u> , stuffer sweep arm

4900/4910 PLUNGER



Item No.	Maize (Hesston) Part No.	Qty Req	Machine Used On	<u>Description</u>
1	M700113172 (700113172)	2	4900/4910	<u>Bearing and housing</u> , greasable, connecting rod rear
2	M700121641D	A/R	4900/4910	<u>Repair plate</u> , front roller shaft, plunger
3	M700121641E	A/R	4900/4910	<u>Repair plate</u> , rear roller shaft, plunger
4	M700113165B	A/R	4900/4910	<u>Repair sleeve</u> , rear roller shaft, plunger
5	M700113187A (700113187)	5	4900/4910	<u>Top plate</u> , with rear extensions (keeps material farther back from face of plunger)
6	M700121641A (700121641)	12	4900/4910	<u>Bracket</u> , to mount brush to plunger top
7	M700713894 (700713894)	12	4900/4910	<u>Brush</u> , (helps to prevent material from entering into knotter)

4900/4910 KNOTTER AND NEEDLE RELATED PARTS



Item No.	Maize (Hesston) Part No.	Qty Req	Machine Used On	Description
1	M700113874BR	1	4900/4910	<u>Plate</u> , to repair needle support for safety rod attachment
2	M700113074CR	1	4900/4910	<u>Plate</u> , to repair needle support for safety rod attachment
3	M3001887	6	4900/4910	<u>Special washer</u> , for tucker arm to keep twine in roller
4	M700707700 (700707700)	18	4900/4910	<u>Roller bearing</u> , needle and tucker arm
5	M3002364	6	4900/4910	<u>Twine finger</u> , with twin row ball bearings

<u>Item No.</u>	<u>Maize (Hesston) Part No.</u>	<u>Qty Req</u>	<u>Machine Used On</u>	<u>Description</u>
6	M3002372	A/R	4900/4910	<u>Replacement bearing</u> , twine finger
7	M6523617 (6523617)	6	4900/4910	<u>Plate</u> , twine finger mount, tucker arm and twine finger arm
8	M6523740 (6523740)	6	4900/4910	<u>Rod</u> , twine finger, special heat treat with washer
9	M3001960 (70924121)	6	4900/4910	<u>Uniball</u> , eliminates slack or wear
10	M8050866 (8050866)	1	4900/4910	<u>Cam follower</u> , tucker arm and twine finger actuator
11	M058875 (58875)	6	4900/Early 4910	<u>Spring</u> , lower slacker arm
12	M3006170	1	4900/4910	<u>Lower slacker arm kit</u> , complete, easy to install
13	M700706376	5	4900/4910	<u>Spring</u> , top hay dogs and side
14	M3006451	1	4900/4910	<u>Knotter blower kit</u> , bladed fan will not plug or get out of balance, complete and easy to install
15	M700113600 (700113600)	1	4900/4910	<u>LH haydog</u> , floor
16	M700113601 (700113601)	1	4900/4910	<u>RH haydog</u> , floor
17	M700113594 (700113594)	5	4900/4910	<u>Center haydog</u> , floor
18	M700113616 (700113616)	5	4900/4910	<u>Wear plate</u> , floor haydogs
19	M700122870 (700122870)	1	4900/4910	<u>Hay restrictor kit</u> , weld in, holds material off of plunger
20	M3007386	1	4900/4910	<u>Hay deflector</u> , lower slacker and tensioner area, helps keep material from building up on lower tensioners